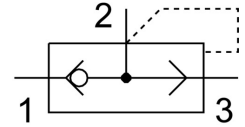


Quick exhaust valve SE-1/8-B

Part number: 9685

FESTO



Data sheet

| Feature | Value |
|---|--|
| Type code | SE |
| Valve function | Quick exhaust |
| Selection of additional function | With pneumatic muffler |
| Pneumatic connection 1 | G1/8 |
| Pneumatic connection 2 | G1/8 |
| Type of mounting | Screw-in |
| Standard nominal flow rate exhaust air 6→5 bar | 660 l/min |
| Standard nominal flow rate pressurization 6→5 bar | 300 l/min |
| Operating pressure | 0.5 bar ... 10 bar |
| Ambient temperature | -20 °C ... 75 °C |
| Housing material | Die-cast zinc |
| Operating medium | Compressed air as per ISO 8573-1:2010 [7:4:4] |
| Nominal width | 5 mm |
| Mounting position | Any |
| Symbol | 00991459 |
| Information on operating and pilot media | Operation with oil lubrication possible (required for further use) |
| Temperature of medium | -20 °C ... 75 °C |
| Noise level | 100 dB(A) |
| Product weight | 75 g |
| Pneumatic connection 3 | G1/8 |
| Seals material | NBR |